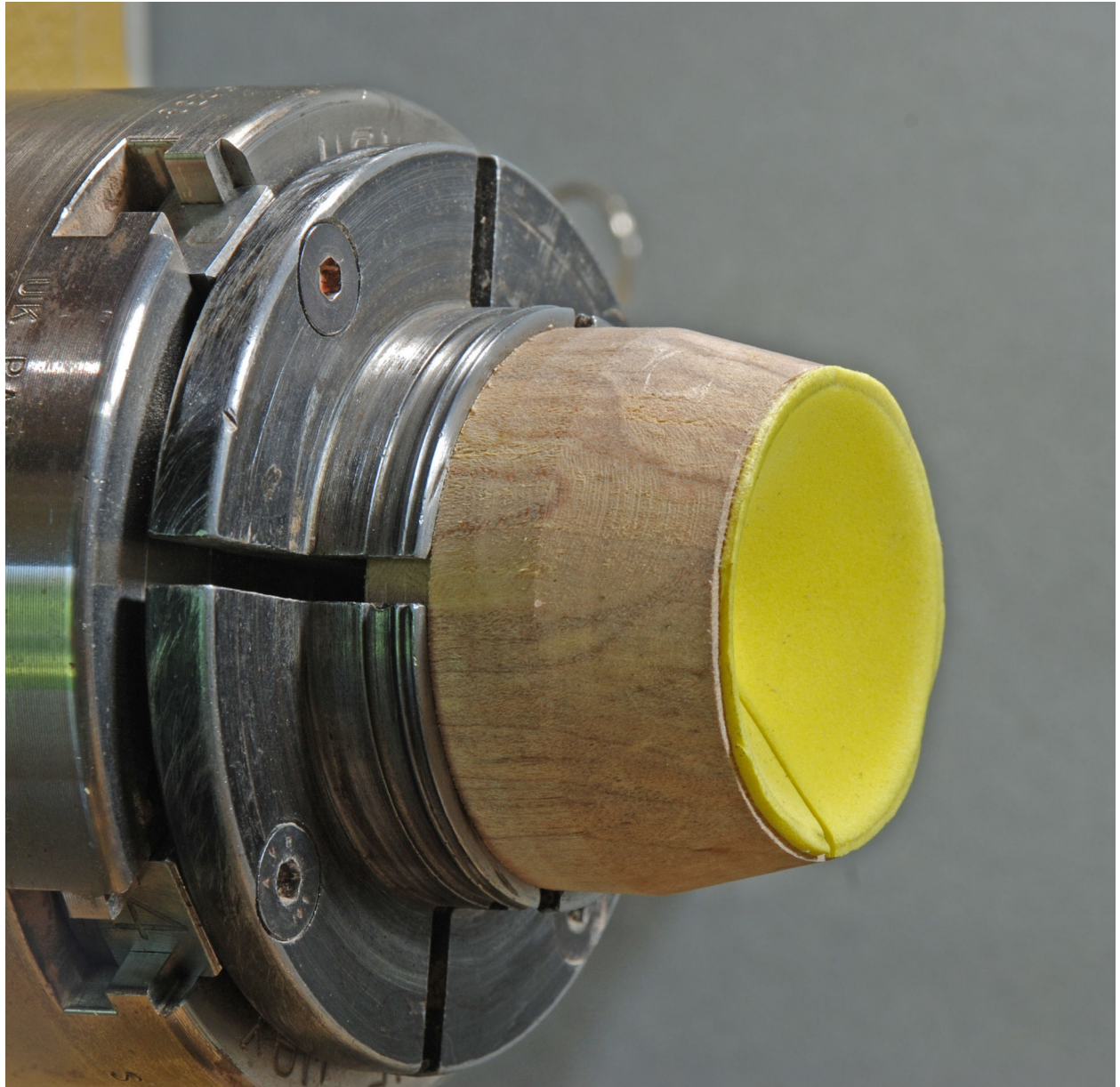
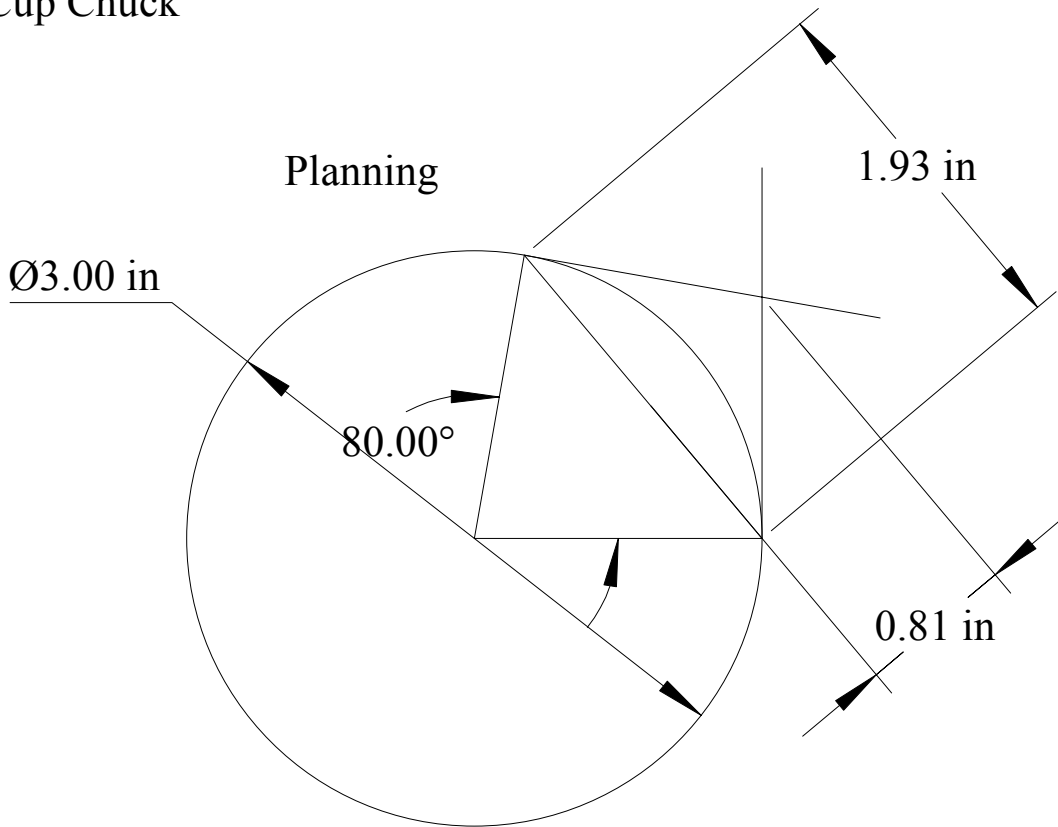


Cup Chuck

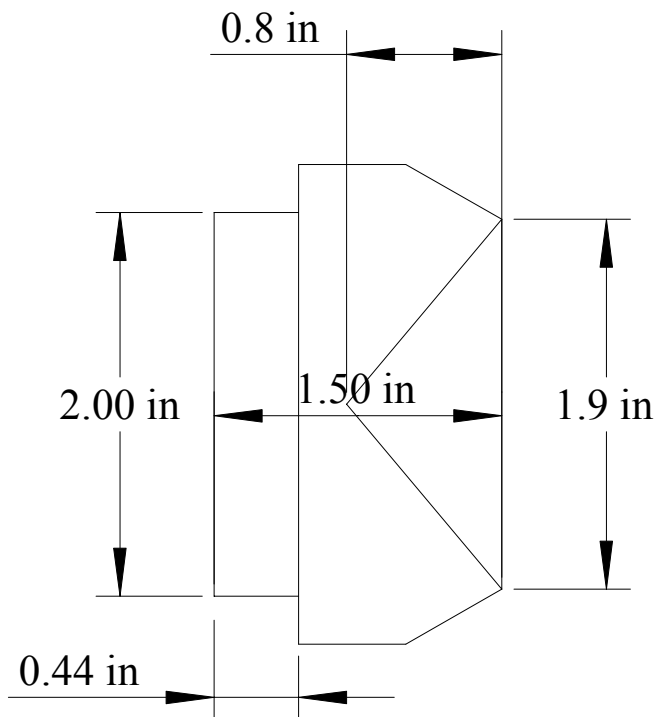


Cup Chuck



80° so whole orb can be sanded with two orientations

Dimensions:



Sequence:

- Cut stock 1-1/2" long
- Mount in chuck & rough round
- Turn 2" tenon 7/16" long
- Remount via tenon
- Depth drill 0.8"
- Mark 1.9" diameter
- Hollow between diameter & depth
- Turn sloping shoulder
- Line with foam:
- Measure from rim to center
- Cut foam circle with that radius.
- Cut radial line.
- Put in cone and mark overlap
- Cut on mark, glue in with 3M #77